

User Manual

PC-410

4 Ports Power Controller



All Rights Reserved

Version: PC-410_2025V1.1

Preface

Read this user manual carefully before using the product. Pictures shown in this manual are for reference only. Different models and specifications are subject to real product.

This manual is only for operation instruction, please contact the local distributor for maintenance assistance. The functions described in this version were updated till July, 2025. In the constant effort to improve the product, we reserve the right to make functions or parameters changes without notice or obligation. Please refer to the dealers for the latest details.

FCC Statement

This equipment generates, uses and can radiate radio frequency energy and, if not installed and used in accordance with the instructions, may cause harmful interference to radio communications. It has been tested and found to comply with the limits for a Class B digital device, pursuant to part 15 of the FCC Rules. These limits are designed to provide reasonable protection against harmful interference in a commercial installation.

Operation of this equipment in a residential area is likely to cause interference, in which case the user at their own expense will be required to take whatever measures may be necessary to correct the interference.

Any changes or modifications not expressly approved by the manufacture would void the user's authority to operate the equipment.



SAFETY PRECAUTIONS

To ensure the best from the product, please read all instructions carefully before using the device. Save this manual for further reference.

- Unpack the equipment carefully and save the original box and packing material for possible future shipment.
- Follow basic safety precautions to reduce the risk of fire, electrical shock and injury to persons.
- Do not dismantle the housing or modify the module. It may result in electrical shock or burn.
- Using supplies or parts not meeting the products' specifications may cause damage, deterioration or malfunction.
- Refer all servicing to qualified service personnel.
- To prevent fire or shock hazard, do not expose the unit to rain, moisture or install this product near water.
- Do not put any heavy items on the extension cable in case of extrusion.
- Do not remove the housing of the device as opening or removing housing may expose you to dangerous voltage or other hazards.
- Install the device in a place with fine ventilation to avoid damage caused by overheat.
- Keep the module away from liquids.
- Spillage into the housing may result in fire, electrical shock, or equipment damage. If an object or liquid falls or spills on to the housing, unplug the module immediately.
- Do not twist or pull by force ends of the optical cable. It can cause malfunction.
- Do not use liquid or aerosol cleaners to clean this unit. Always unplug the power to the device before cleaning.
- Unplug the power cord when left unused for a long period of time.
- Information on disposal for scrapped devices: do not burn or mix with general household waste, please treat them as normal electrical wastes.

Table of Contents

1. Product Introduction.....	1
1.1 Features	1
1.2 Package List	1
2. Specification	2
3. Panel Description.....	3
3.1 Front Panel	3
3.2 Rear Panel.....	4
4. Panel Drawing	4
5. System Connection.....	5
5.1 Usage Precaution	5
5.2 System Diagram	5
6. Web-GUI Control	6
6.1 Dashboard	7
6.2 Network	7
6.3 Schedule.....	8
6.4 Protocols.....	8
6.5 Email.....	9
6.6 Clock.....	9
6.7 System.....	10
6.8 Security.....	10
6.9 Maintenance	11
7. RS-232 Control	12
7.1 RS-232 Control Software.....	12
7.2 RS-232 Command	13
7.2.1 Get the Device Information	13
7.2.2 Setting the Device	15
7.2.3 Restore the Device	20
8. Customer Service	21

1. Product Introduction

Thanks for choosing the 4 Ports Power Controller with redundant TCP/IP port. The controller is designed for power control and metering. It supports up to AC110V~250V 10A IEC C14 power input and four 10A IEC C13 outlets.

The controller supports power control and metering via TCP/IP, which provide multiple network protocols and IoT protocols.

1.1 Features

- Switch control, voltage, current and power consumption metering.
- 2x TCP/IP network ports to provide continuous network services.
- Overload protection, wiring error protection, remote login verification.
- Supports multiple network protocols and IoT protocols.
- Controllable via RS-232 and Web-GUI.

1.2 Package List

- 1x PC-410
- 1x RS-232 Cable
- 1x Power Cable (AU/ EU/ UK/ US)
- 2x Mounting Ears and 4x Screws
- 4x Rubber Feet
- 1x User Manual

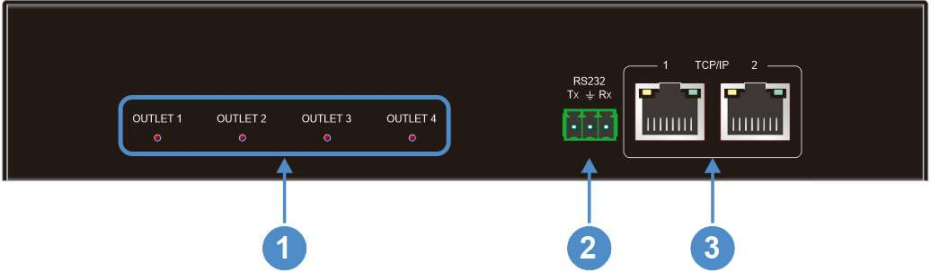
Note: Please contact your distributor immediately if any damage or defect in the components is found.

2. Specification

Input	
Voltage	AC 110-250V
Frequency	50/60Hz
Current	Max. 10A
Connector	1x IEC C14
Output	
Voltage	AC 110-250V
Frequency	50/60Hz
Current	Max. 10A per port
Connector	4x IEC C13
Control	
Mode	TCP/IP, RS-232
Connector	2x RJ45, 1x 3-pin phoenix terminal
General	
Voltage Range	110-250V
Current Range	0-10A
Frequency Range	45-65Hz
Power Factor	0-1
Operation Temperature	-5°C ~ +55°C
Storage Temperature	-20°C ~ +70°C
Relative Humidity	0% ~ 80%
Standby Power Consumption	1.53W
Dimension (W*H*D)	218mm x 42.5mm x 153mm
Net Weight	970g

3. Panel Description

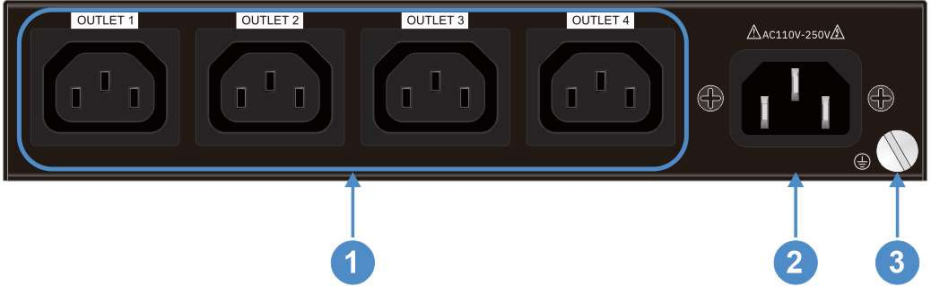
3.1 Front Panel



No.	Name	Description
①	OUTLET INDICATOR	<p>4x blue/ red LEDs, power output indicator.</p> <ul style="list-style-type: none"> ● LED off: Stop power output ● Blue on: Power output ● Blue flash: Delayed state before power output ● Red on: Overload ● Red flash: Detect the third-party device. If the third-party device is detected, the LED will turn blue. If the third-party device is not detected, the LED will flash for 10 seconds and then turns blue.
②	RS232	1x 3-pin phoenix terminal, for RS-232 control.
③	TCP/IP	<p>2x RJ45, supports access to Web-GUI.</p> <ul style="list-style-type: none"> ● Green and yellow on: Link status ● Green and yellow flash: Data transfer ● Green and yellow off: Disconnect

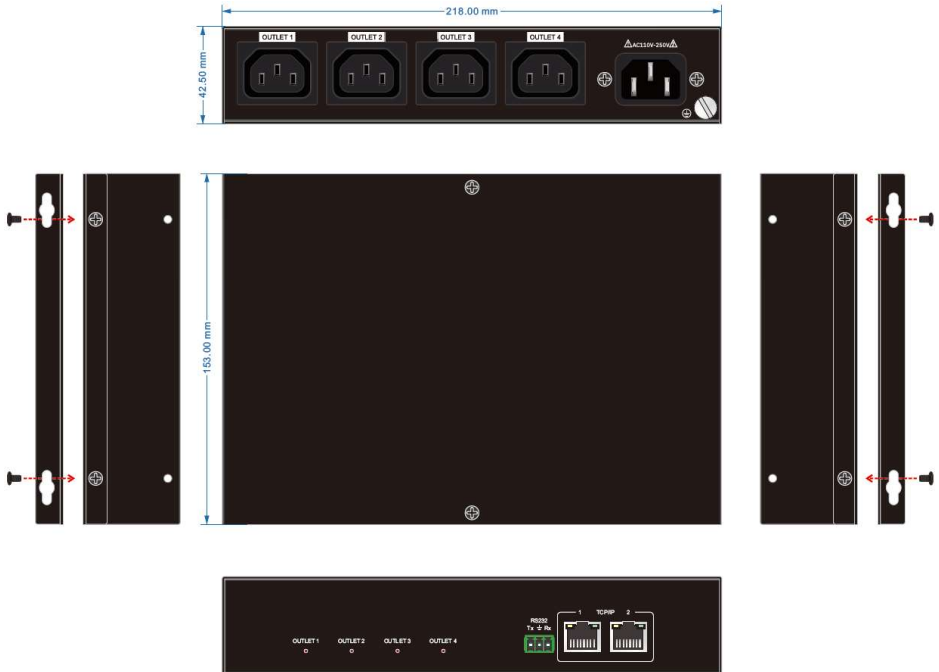
4 Ports Power Controller

3.2 Rear Panel



No.	Name	Description
①	OUTLET	4x IEC C13, for power output. Up to 10A per port.
②	INLET	1x IEC C14, for power input. AC 110-250V 10A.
③	GDN	1x screw ground terminal.

4. Panel Drawing

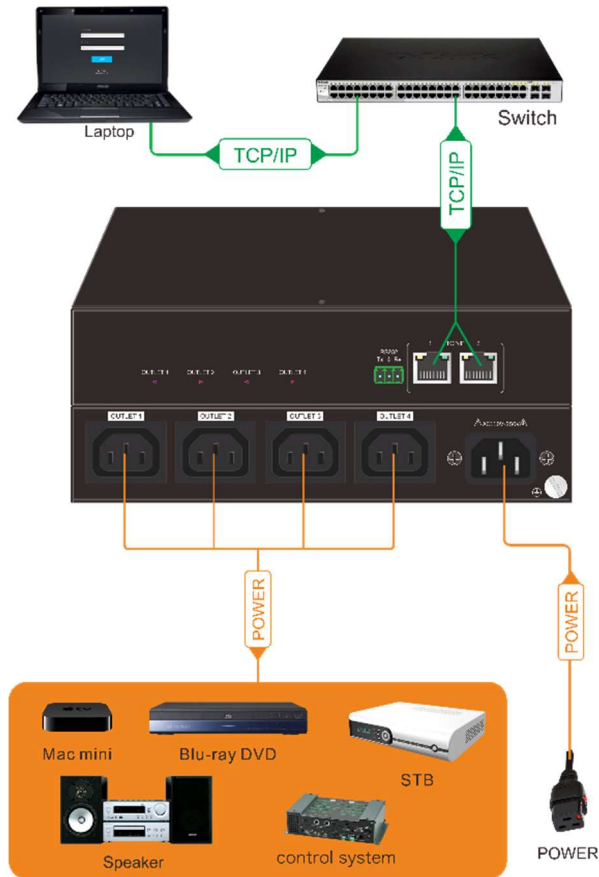


5. System Connection

5.1 Usage Precaution

- Make sure all components and accessories included before installation.
- System should be installed in a clean environment with proper temperature and humidity.
- All of the power switches, plugs, sockets, and power cords should be insulated and safe.
- All devices should be connected before power on.

5.2 System Diagram

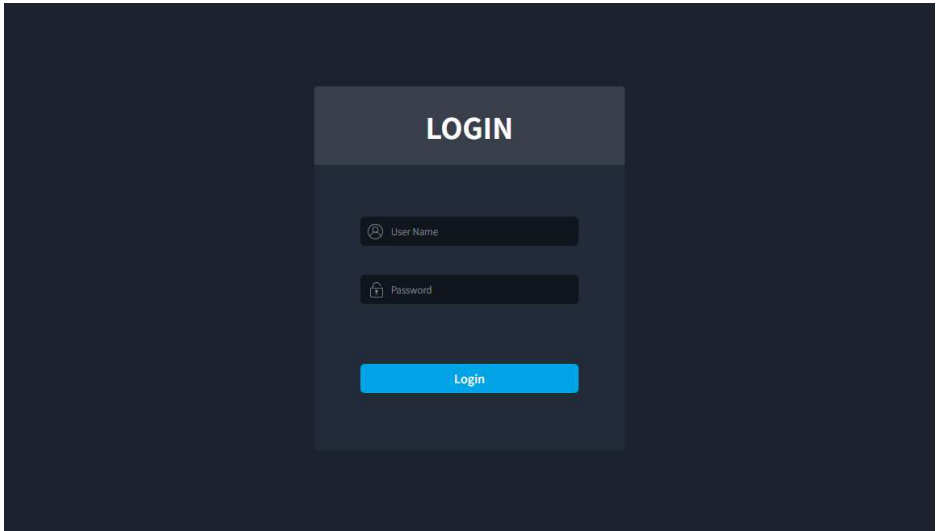


6. Web-GUI Control

Connect the TCP/IP port of the PC-410. TCP/IP supports DHCP by default. If it is DHCP, please use the assigned IP address. If connect the device directly to the PC or using the static IP, please enter the default TCP/IP information as follow:

- TCP/IP 1: 192.168.0.178
- TCP/IP 2: 169.254.2.225

Please type the IP address in the address bar of the browser to enter the Web-GUI login interface.



Then type the User Name and the Password. The default login information is as follows:

- User Name: admin
- Password: Admin123@

Last, click Login to enter the main interface.

Note: To protect the safety of the device, please change the default password in time.

4 Ports Power Controller

6.1 Dashboard

System Time: 12:12AM 11/05/2023 Uptime: 0days 0hrs 13mins System auto logout in 15mins

Dashboard 4 Ports Smart Power Controller

System

SYSTEM ON SYSTEM OFF SYSTEM RESTART ALL METERS RESET

Total Current	Total Power	Voltage	Total Energy Consumed	Frequency	Power Factor
0.000A	0.000W	232.151V	0.000000kWh	50.15Hz	0.00

Energy measured since: 12:12AM 11/05/2023

Outlet

OUTLET 1 OUTLET 2 OUTLET 3 OUTLET 4

Current	Power	Energy Consumed
0.000A	0.000W	0.000000kWh
0.000A	0.000W	0.000000kWh
0.000A	0.000W	0.000000kWh
0.000A	0.000W	0.000000kWh

GUI/V1.0.0 Firmware: V1.0.0

System: Control system and metering system data.

Outlet: Control per outlet and metering outlet data.

6.2 Network

System Time: 12:13AM 11/05/2023 Uptime: 0days 0hrs 14mins System auto logout in 15mins

Network 4 Ports Smart Power Controller

TCP/IP 1 Settings

Enable TCP/IP 1

Use IPv4 DHCP Use Static IP

MAC Address: CC:8C:DA:36:F9:8B

IPv4 Address: 192.168.0.178

IPv4 Netmask: 255.255.255.0

IPv4 Gateway: 192.168.0.1

IPv4 DNS: 8.8.8.8

TCP/IP 2 Settings

Enable TCP/IP 2

Use IPv4 DHCP Use Static IP

MAC Address: CC:8C:DA:36:F9:8A

IPv4 Address: 169.254.2.225

IPv4 Netmask: 255.255.0.0

IPv6 Settings

Ethernet TCP/IP 1 TCP/IP 2

Use IPv6 Protocol Yes No

Use IPv6 Router Advertisement Yes No

IPv6 Settings: DHCP v6 Manual

IPv6 Addresses: /64

IPv6 DNS Address 1: 114.114.114.114

IPv6 DNS Address 2: 114.114.114.114

IPv6 Gateway Address 1:

IPv6 Gateway Address 2:

Reply ICMP PING: Yes No

HTTP Server: HTTP ONLY HTTPS ONLY

HTTP Server Port: 80

HTTPS Server Port: 443

TLS Versions: TLS 1.2 only

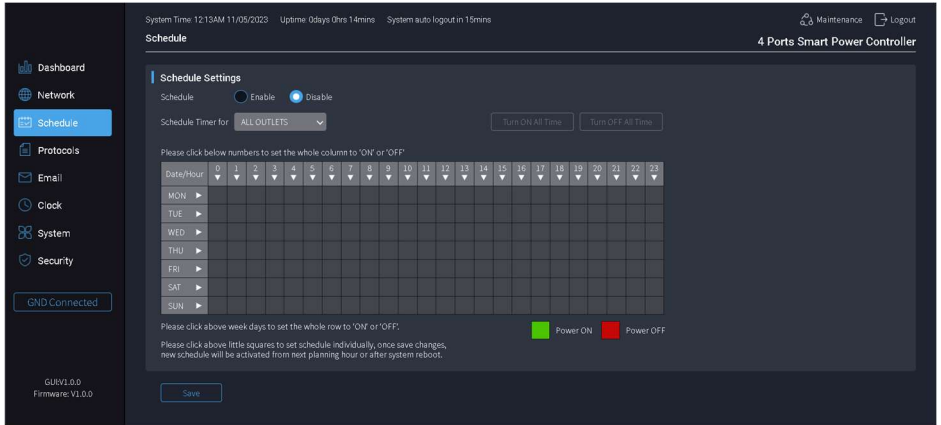
mDNS: Yes No

Hostname: PC-410

GUI/V1.0.0 Firmware: V1.0.0

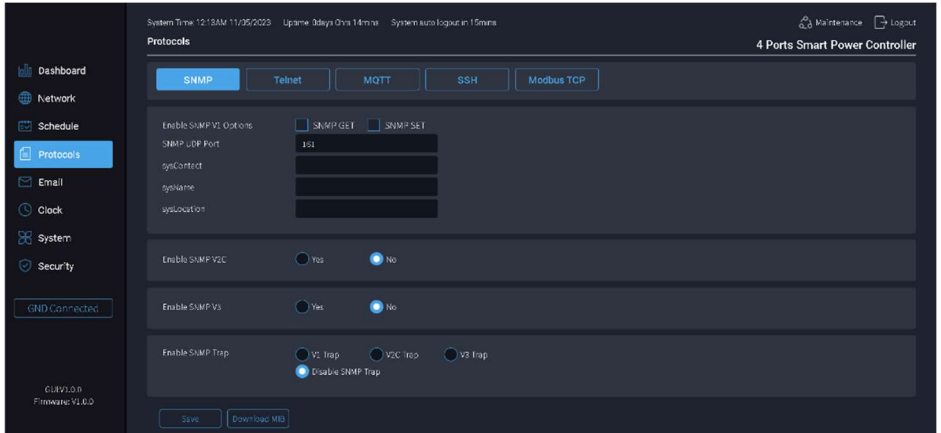
Here can set up the TCP/IP, IPV6, HTTP and mDNS.

6.3 Schedule



Schedule Settings: enable/disable the outlet according to the set time.

6.4 Protocols



Here are some available protocols for user: SNMP, Telnet, MQTT, SSH and Modbus TCP. They are used to establish connection between some software and the device.

6.5 Email

System Time: 12:14AM 11/05/2023 Uptime: 0days 0hrs 15mins System auto logout in 15mins

Maintenance Logout

Email

4 Ports Smart Power Controller

SMTP Settings

Using Outlook Client Yes No

SMTP Server: [Redacted]

SMTP Server Port: [Redacted]

Connection Encryption: None

Enable SMTP Authentication Yes No

Username: [Redacted]

Password: [Redacted]

Repeat Password: [Redacted]

Default Sender Name: [Redacted]

Send System Daily Reports Yes No

Report send only when alarm happens if not tick Yes.

Daily Report Time: 11:59 AM (hh:mm)

Save

Email Testing

SMTP Setting must be completed before email testing.

To Recipients: [Redacted]

Separate by ";" to send multiple recipients, for example: user1@email.com,user2@email.com

From Sender: [Redacted]

Fill in custom email sender address, leave blank by using default address

Send

Custom Email Content

Email Topic: [Redacted]

Using system default topic when custom topic is no set.

To Recipients: [Redacted]

Separate by ";" to send multiple recipients, for example: user1@email.com,user2@email.com

Save

Dashboard Network Schedule Protocols Email **Clock** System Security

GND Connected

GUI V1.0.0 Firmware: V1.0.0

SMTP Settings: type SMTP server and other related information.

Email Testing: type test email.

Custom Email Content: type test topic.

6.6 Clock

System Time: 12:14AM 11/05/2023 Uptime: 0days 0hrs 15mins System auto logout in 15mins

Maintenance Logout

Clock

4 Ports Smart Power Controller

NTP Settings

Enable NTP Server Yes No

Save

Manual Settings

Set Date Manually: 11/05/2023 (dd/mm/yyyy)

Set Time Manually: 12:14 AM (hh:mm)

Clock Format: 12-hour 24-hour

Save

Dashboard Network Schedule Protocols Email **Clock** System Security

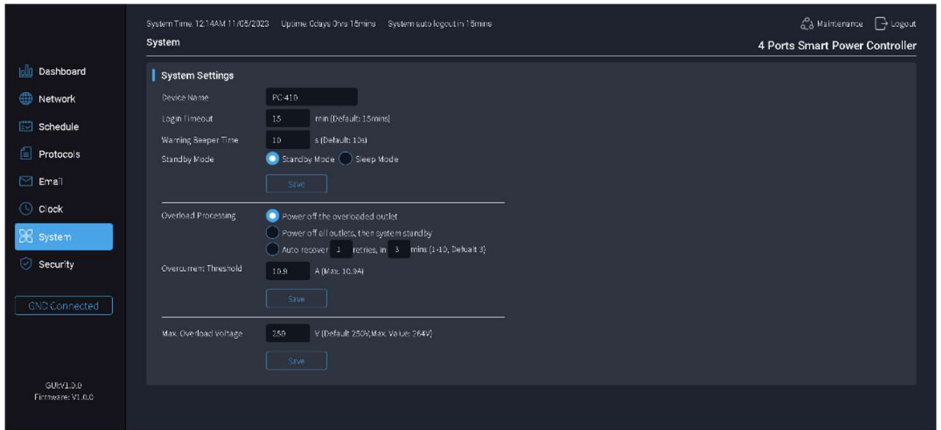
GND Connected

GUI V1.0.0 Firmware: V1.0.0

NTP Settings: type NTP server and select other related information.

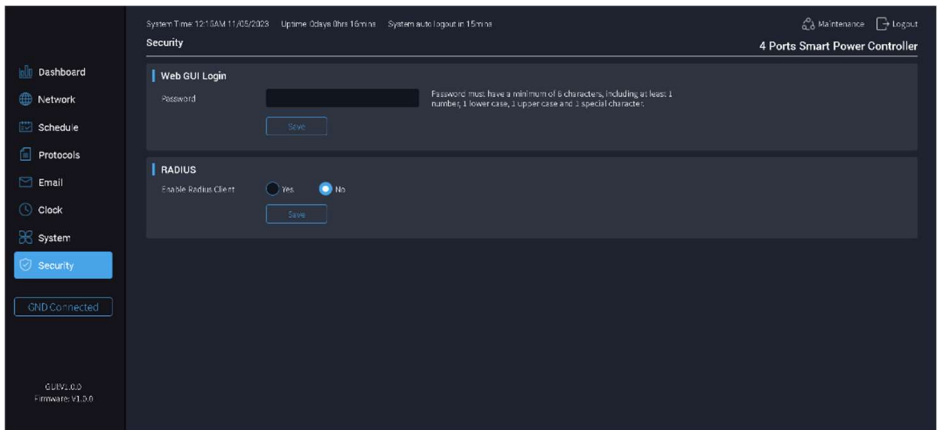
Manual Settings: when not using NTP, the time can be set manually.

6.7 System



Here can set up the device function response time, overload current threshold and overload voltage threshold, etc.

6.8 Security



Web GUI Login: change the login password of GUI.
RADIUS: enable the RADIUS for security login.

6.9 Maintenance

The screenshot shows the 'Maintenance' page of the 4 Ports Smart Power Controller. The page is dark-themed and includes a sidebar on the left with navigation options: Dashboard, Network, Schedule, Protocols, Email, Clock, System, and Security. A 'GND Connected' indicator is visible in the sidebar. The main content area is titled 'Maintenance' and includes the following sections:

- System Logs:** Features buttons for 'View Log File', 'Clear Log File', and 'Export Log File' above a table with 10 empty rows.
- Firmware Update:** Includes a 'Select File' dropdown set to 'C://' and an 'Upgrade' button.
- SSL Certificate Upload:** Contains two 'Please select key/.pem file' dropdowns for 'SSL Key' and 'SSL Certificate', with 'Upload' and 'Revert to Default' buttons below.
- Config Import:** Includes a 'Select File' dropdown set to 'C://' and an 'Import' button.
- Config Export:** Features an 'Export' button.
- Device Management:** Includes buttons for 'Restart Device', 'Factory Reset', and 'Flush DNS Cache'.

At the top of the page, system information is displayed: 'System Time: 11:53 12/11/2025', 'Uptime: 0days 0hrs 4mins', and 'System auto logout in 9999mins'. The top right corner shows 'Maintenance' and 'Logout' links, and the device name '4 Ports Smart Power Controller'. The bottom left corner indicates 'GLS-V1.0.2 Firmware: V1.0.1'.

Here can view system logs, upgrade firmware, upload SSL certificate, import and export configurations, and restart devices, etc.

7. RS-232 Control

7.1 RS-232 Control Software

- Installation: Copy the control software file to the control PC
- Uninstallation: Delete all the control software files in corresponding file path.

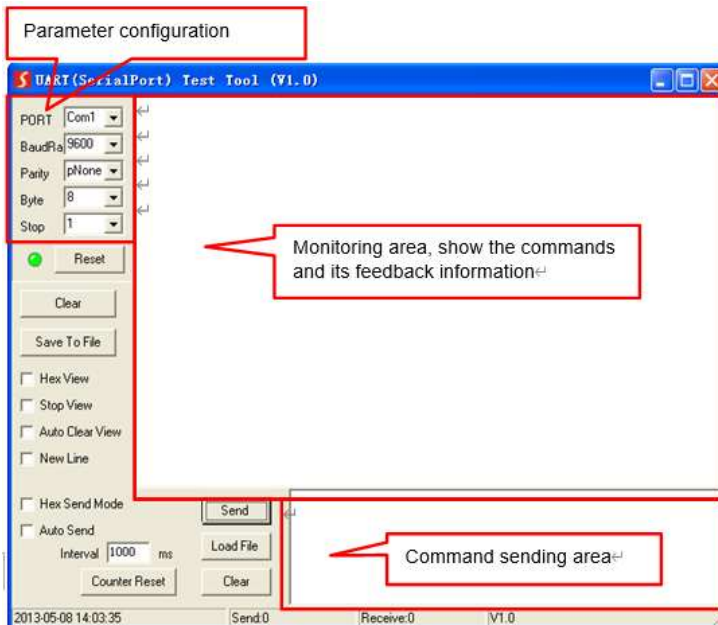
Basic Setting:

Connect the switcher kit with all input devices and output devices needed, then to connect it with a PC which is installed with RS-232 control software. Double-click the software icon to run this software.

Here takes the software CommWatch.exe as example:



The main view is shown as below:



Please set the parameters of COM number, bound rate, data bit, stop bit and the parity bit correctly, and then you are able to send command in command sending area. For related parameters, please refer to 7.2 RS-232 Command.

7.2 RS-232 Command

- Baud rate: 57600 (default)
- Data bit: 8
- Stop bit: 1
- Parity bit: NONE
- Command terminator: <CR><LF>
- Error command feedback code: <Command Error
<Out of Range

Note:

1. Commands are not case sensitive and can automatically identify mixed case commands;
2. The "0" in front of the valid value can be ignored, for example: 01 and 1 inputs are both normal variable values;
3. The space between the command and the variable can be ignored, for example: >SetVideo01 and >SetVideo 01 commands can be sent effectively.

7.2.1 Get the Device Information

Command	Function	Example & Feedback
>?/Help	Query device status	>? or >Help <hr/> Some of the feedback is as follows: <PC-410 <V1.0.0a <System Information Commands >?/Help Print Help Information >GetStatus Print System Status And Port Status >GetOutletStatus xx Print Outlet xx On/Off >GetEleva Print All Outputs Electricity Level Information >GetFwVersion Print FW Version And GUI Version <System Control Commands >SetDeviceName:xx Device Name: xx >SetPower On/Off Set System Power On/Off >FactoryReset FactoryReset >Reboot Set System Reboot And Apply New Config!!! ...
		>GetStatus <hr/> Some of the feedback is as follows: <PC-410

4 Ports Power Controller

<p>>GetStatus</p>	<p>Query device status</p>	<pre><V1.0.0a <GetPowerStatus On <GetTCP/IPEnable 1 <GetRS232Baud 57600 <GetSystemCurrentThreshold 10.9A <GetSystemVoltageThreshold 250V <Outlet 1 Off <Outlet 2 Off <Outlet 3 Off <Outlet 4 Off <GetGroundStatus Properly Grounded <GetOutletMode 1 Idle <GetOutletMode 2 Idle <GetOutletMode 3 Idle <GetOutletMode 4 Idle <GetOutletPowerOnTime 1 2s <GetOutletPowerOnTime 2 3s <GetOutletPowerOnTime 3 4s <GetOutletPowerOnTime 4 5s <GetOutletPowerOffTime 1 2s <GetOutletPowerOffTime 2 3s <GetOutletPowerOffTime 3 4s <GetOutletPowerOffTime 4 5s <GetOutletEleResetTime 1 10s <GetOutletEleResetTime 2 10s <GetOutletEleResetTime 3 10s <GetOutletEleResetTime 4 10s ...</pre>
<p>>GetOutletStatus</p>	<p>Query single-channel power information >GetOutletStatus [Param1] Param1 = 0-4 0: All Outlets 1: Outlet1 2: Outlet2 3: Outlet3 4: Outlet4</p>	<pre>>GetOutletStatus 1 <Outlet 1 On</pre>
<p>>GetElesta</p>	<p>Query the device power level</p>	<pre>>GetElesta <PC-410 <V1.0.0a <Total Current 10.121A <Total Power 2255.729W <Total Energy Consumed 0.025465kWh <Voltage 222.880V <Frequency 50.00Hz <Power Factor 0.99 <GetOutletVoltage 1 222.880V <GetOutletVoltage 2 222.880V <GetOutletVoltage 3 222.880V <GetOutletVoltage 4 222.880V <GetOutletCurrent 1 4.202A <GetOutletCurrent 2 5.918A <GetOutletCurrent 3 0.000A <GetOutletCurrent 4 0.000A</pre>

4 Ports Power Controller

		<GetOutletPower 1 936.620W <GetOutletPower 2 1319.129W <GetOutletPower 3 0.000W <GetOutletPower 4 0.000W <GetOutletConsumed 1 0.011539kWh <GetOutletConsumed 2 0.014438kWh <GetOutletConsumed 3 0.000000kWh <GetOutletConsumed 4 0.000000kWh <GetOutletPowerFactor 1 0.99 <GetOutletPowerFactor 2 0.99 <GetOutletPowerFactor 3 0.00 <GetOutletPowerFactor 4 0.00
>GetFwVersion	Query version information	>GetFwVersion <GetFW Version: V1.0.0a <GetGUI Version: V1.0.0a
>GetSysTime	Query system time	>GetSysTime <GetSystemTime: 2025-06-20 12:47:16 Thu
>GetNetTcp/Ip List	Query the current network IP	>GetNetTcp/Ip List <List Current TCP/IP Address

7.2.2 Setting the Device

Command	Function	Example & Feedback
>SetDeviceName	Set device name >SetDeviceName:[Param1] XX = the device name to be sent (up to 14 characters)	>SetDeviceName:PC-410 <Device Name: PC-410
>SetPower	Enter/Exit Standby Mode >SetPower [Param1] Param1 = On,Off On - Power on Off - Power off	>SetPower On >SetPower Off <System Power Off <System Power On, Please Wait A Moment... Done
>SetVoltageThreshold	Set the system voltage threshold >SetVoltageThreshold [Param1] Param1 =198-264	>SetVoltageThreshold 264 <System Voltage Threshold 264V
>SetSafeMode	Set the system safety mode when overloaded >SetSafeMode [Param1] Param1 = 0-2 0: Outlet_Shutdown 1: System_Shutdown 2:Auto_Retry	>SetSafeMode 0 >SetSafeMode 1 >SetSafeMode 2 <System Safe Mode : Outlet_Shutdown <System Safe Mode : System_Shutdown <System Safe Mode : Auto_Retry
>SetOverloadRetryCnt	Set the number of restarts when overloaded >SetOverloadRetryCnt [Param1]	>SetOverloadRetryCnt 1 >SetOverloadRetryCnt 2 >SetOverloadRetryCnt 3 <System Retry Number 1 <System Retry Number 2

4 Ports Power Controller

	Param1 = 1-3 1(Default)	< System Retry Number 3
>SetOverloadRetry Time	Set the restart time when overload occurs, in minutes >SetOverloadRetryTime [Param1] Param1 = 1-10 3 (Default)	>SetOverloadRetryTime 1
		<System Retry Delay Time 1mins
>SetStandbyMode	Set system standby mode >StandbyMode [Param1] Param1 = 0-1 0: All_Standby_Mode 1: Sleep_Mode	>SetStandbyMode 0 >SetStandbyMode 1
		<System Standby Mode : All_Standby_Mode <System Standby Mode : Sleep_Mode
>SetRs232Baud	Set RS232 baud rate >SetRs232Baud [Param1] Param1 = 1-7 1: 2400 2: 4800 3: 9600 4: 19200 5: 38400 6: 57600 (Default) 7: 115200	>SetRs232Baud 6
		<RS232Baud 57600
>SetRs232Out	RS232 transparent transmission >SetRs232Out [Param1][Param2][Para m3][Param4] Param1 = a,h a: ASCII h: HEX Param2 = 1-7 1: 2400 2: 4800 3: 9600 4: 19200 5: 38400 6: 57600(Default), 7: 115200 Param1 = 1-3 1: None 2: Even 3: Odd Param4 = string	>SETRS232OUT a:6:1:RS232
		RS232
>SetBeeperTime	Set the buzzer response time when alarm occurs, in seconds >SetBeeperTime [Param1] Param1 = 0: 9999 10 (Default)	>SetBeeperTime 10
		<Buzzer Sound Time 10s

4 Ports Power Controller

>SetOutletTime	Set the delay time of the channel opening action, in seconds >SetOutletOnTime [Param1][Param2] Param1 = 1-4 1: Outlet1 2: Outlet2 3: Outlet3 4: Outlet4 Param2 = 2-9999	>SetOutletOnTime 1:2
		<Outlet 1 Power_On Delay 2s
	Set the delay time of the channel closing action, in seconds >SetOutletOffTime [Param1][Param2] Param1 = 1-4 1: Outlet1 2: Outlet2 3: Outlet3 4: Outlet4 Param2 = 0-9999	>SetOutletOffTime 1:1
		<Outlet 1 Power_Off Delay 1s
>SetOutletEleResetTime	Set the channel power reset delay time, in seconds >SetOutletEleResetTime [Param1][Param2] Param1 = 1-4 1: Outlet1 2: Outlet2 3: Outlet3 4: Outlet4 Param2 = 0-9999 10(Default)	>SetOutletEleResetTime 1:10
		<Outlet 1 Electrical Work Reset Duration 10s
>SetAllOut	Set the switch status of all channels >SetAllOut [Param1] Param1 = On,Off	>SetAllOut On >SetAllOut Off
		<All Outlets On <All Outlets Off
>SetOutlet	Set the single channel switch status >SetOutlet [Param1][Param2] Param1 = 1-4 1: Outlet1 2: Outlet2 3: Outlet3 4: Outlet4 Param2 = On,Off	>SetOutlet 1 On
		<Outlet 1 On
>SetSysTime	Set system time >SetSysTime [Param1] param1 = year-month-day;hour-minutes-seconds	>SetSysTime 2025-03-18;11-26-59
		<SetSystemTime: 2025-03-18 11:26:59

4 Ports Power Controller

>SetNetTcp/IpEnable	Set TCP/IP enable >SetNetTcp/IpEnable [Param1] Param1 = 1-2 1: TCP/IP1 2: TCP/IP2	>SetNetTcp/IpEnable 1 >SetNetTcp/IpEnable 2
		<TCP/IP1 Enable <TCP/IP2 Enable
>SetNetTcp/Ip1Dhcp	Set TCP/IP1 DHCP status >SetNetTcp/Ip1Dhcp [Param1] Param1 = On,Off	>SetNetTcp/Ip1Dhcp On >SetNetTcp/Ip1Dhcp Off
		<TCP/IP1 DHCP On <TCP/IP1 DHCP Off
>SetNetTcp/Ip1Ip	Set TCP/IP1 IP address >SetNetTcp/Ip1Ip [Param1] Param1 = XXX.XXX.XXX.XXX	>SetNetTcp/Ip1Ip 192.168.000.001
		<TCP/IP1 IP Address 192.168.000.001
>SetNetTcp/Ip1Gw	Set TCP/IP1 Gateway address >SetNetTcp/Ip1Gw [Param1] Param1 = XXX.XXX.XXX.XXX	>SetNetTcp/Ip1Gw 192.168.000.254
		<TCP/IP1 Gateway Address 192.168.000.254
>SetNetTcp/Ip1Sm	Set TCP/IP1 Subnet Mask address >SetNetTcp/Ip1Sm [Param1] Param1 = XXX.XXX.XXX.XXX	>SetNetTcp/Ip1Sm 192.168.000.254
		<TCP/IP1 Subnet Mask 192.168.000.254
>SetNetTcp/Ip2Dhcp	Set TCP/IP2 DHCP status >SetNetTcp/Ip2Dhcp [Param1] Param1 = On,Off	>SetNetTcp/Ip2Dhcp On >SetNetTcp/Ip2Dhcp Off
		<TCP/IP2 DHCP On <TCP/IP2 DHCP Off
>SetNetTcp/Ip2Ip	Set TCP/IP2 IP address >SetNetTcp/Ip2Ip [Param1] Param1 = XXX.XXX.XXX.XXX	>SetNetTcp/Ip2Ip 192.168.000.001
		<TCP/IP2 IP Address 192.168.000.001
>SetNetTcp/Ip2Gw	Set TCP/IP2 Gateway address >SetNetTcp/Ip2Gw [Param1] Param1 = XXX.XXX.XXX.XXX	>SetNetTcp/Ip2Gw 192.168.000.254
		<TCP/IP2 Gateway Address 192.168.000.254
>SetNetTcp/Ip2Sm	Set TCP/IP2 Subnet Mask address >SetNetTcp/Ip2Sm [Param1] [Param1]	>SetNetTcp/Ip2Sm 192.168.000.254
		<TCP/IP2 Subnet Mask 192.168.000.254
>SetNetMdns	Set mDNS status >SetNetMdns [Param1] Param1 = On,Off	>SetNetMdns On >SetNetMdns Off
		<mDNS On <mDNS Off

4 Ports Power Controller

>SetNetRb	Restart IP service	>SetNetRb <Network Reboot And Apply New Config
>SetNetTcp/Ipv61P rotocol	Set TCP/IPv61 Protocol status >SetNetTcp/Ipv61Protoc ol [Param1] Param1 = On,Off	>SetNetTcp/Ipv61Protocol On >SetNetTcp/Ipv61Protocol Off <TCP/IPv6 1 Protocol On <TCP/IPv6 1 Protocol Off
>SetNetTcp/Ipv61D hcp	Set TCP/IPv61 DHCP status >SetNetTcp/Ipv61Dhcp [Param1] Param1 = On,Off	>SetNetTcp/Ipv61Dhcp On >SetNetTcp/Ipv61Dhcp Off <TCP/IPv6 1 DHCP On <TCP/IPv6 1 DHCP Off
>SetNetTcp/Ipv61I p	Set TCP/IPv61 IP address >SetNetTcp/Ipv61Ip [Param1] Param1 = XXXX:XXXX:XXXX:XXX X:XXXX:XXXX:XXXX:X XXX	>SetNetTcp/Ipv61Ip fe80:0000:0000:0000:0440:44ff:1233:5678 <TCP/IPv61 IP Address fe80:0000:0000:0000:0440:44ff:1233:5678
>SetNetTcp/Ipv61G w	Set TCP/IPv61 Gateway address >SetNetTcp/Ipv61Gw [Param1][Param2] Param1 = 1-2 Param2 = XXXX:XXXX:XXXX:XXX X:XXXX:XXXX:XXXX:X XXX	>SetNetTcp/Ipv61Gw 1 fe80:0000:0000:0000:0440:44ff:1233:0001 >SetNetTcp/Ipv61Gw 2 fe80:0000:0000:0000:0440:44ff:1233:0001 <TCP/IPv61 Gateway Address1 fe80:0000:0000:0000:0440:44ff:1233:0001 <TCP/IPv61 Gateway Address2 fe80:0000:0000:0000:0440:44ff:1233:0002
>SetNetTcp/Ipv62P rotocol	Set TCP/IPv62 Protocol status >SetNetTcp/Ipv62Protoc ol [Param1] Param1 = On,Off	>SetNetTcp/Ipv62Protocol On >SetNetTcp/Ipv62Protocol Off <TCP/IPv6 2 Protocol On <TCP/IPv6 2 Protocol Off
>SetNetTcp/Ipv62D hcp	Set TCP/IPv62 DHCP status >SetNetTcp/Ipv62Dhcp [Param1] Param1 = On,Off	>SetNetTcp/Ipv62Dhcp On >SetNetTcp/Ipv62Dhcp Off <TCP/IPv6 2 DHCP On <TCP/IPv6 2 DHCP Off
>SetNetTcp/Ipv62I p	Set TCP/IPv62 IP address >SetNetTcp/Ipv62Ip [Param1] Param1 = XXXX:XXXX:XXXX:XXX X:XXXX:XXXX:XXXX:X XXX	>SetNetTcp/Ipv62Ip fe80:0000:0000:0000:0440:44ff:1233:5679 <TCP/IPv62 IP Address fe80:0000:0000:0000:0440:44ff:1233:5679

4 Ports Power Controller

>SetNetTcp/Ipv62Gw	Set TCP/IPv62 Gateway address >SetNetTcp/Ipv62Gw [Param1][Param2] Param1 = 1-2 Param2 = XXXX:XXXX:XXXX:XXX X:XXXX:XXXX:XXXX:X XXX	>SetNetTcp/Ipv62Gw 1 fe80:0000:0000:0000:0440:44ff:1233:0001 >SetNetTcp/Ipv62Gw 2 fe80:0000:0000:0000:0440:44ff:1233:0002
		<TCP/IPv62 Gateway Address1 fe80:0000:0000:0000:0440:44ff:1233:0001 <TCP/IPv62 Gateway Address2 fe80:0000:0000:0000:0440:44ff:1233:0002

7.2.3 Restore the Device

Command	Function	Example & Feedback
>RsAllOutEle	Reset all channel power values	>RsAllOutEle <Clean Up Electrical Work: All Outlets
>RsOutEle	Reset single channel power value >RsOutEle [Param1] Param1 = 1-4 1: Outlet1 2: Outlet2 3: Outlet3 4: Outlet4	>RsOutEle 1 <Clean Up Electrical Work: Outlet 1
>FactoryReset	Restore factory settings	>FactoryReset <FactoryReset
>Reboot	MCU restart	>Reboot <Reboot
>Resta	MCU restart	>Resta <System Restart

8. Customer Service

The return of a product to our Customer Service implies the full agreement of the terms and conditions hereinafter. These terms and conditions may be changed without prior notice.

1) **Warranty**

The limited warranty period of the product is fixed three years.

2) **Scope**

These terms and conditions of Customer Service apply to the customer service provided for the products or any other items sold by authorized distributor only.

3) **Warranty Exclusions:**

- Warranty expiration.
- Factory applied serial number has been altered or removed from the product.
- Damage, deterioration or malfunction caused by:
 - ◇ Normal wear and tear.
 - ◇ Use of supplies or parts not meeting our specifications.
 - ◇ No certificate or invoice as the proof of warranty.
 - ◇ The product model showed on the warranty card does not match with the model of the product for repairing or had been altered.
 - ◇ Damage caused by force majeure.
 - ◇ Servicing not authorized by distributor.
 - ◇ Any other causes which do not relate to a product defect.

4) **Documentation:**

Customer Service will accept defective product(s) in the scope of warranty coverage at the sole condition that the defeat has been clearly defined, and upon reception of the documents or copy of invoice, indicating the date of purchase, the type of product, the serial number, and the name of distributor.

Note: For further assistance or solutions, please contact your local distributor.