

WOXCON

User Manual

CE-SS3113

HDMI 2.0 Bi-directional Switcher

All Rights Reserved

Version: CE-SS3113_2018V1.1

HDMI 2.0 Bi-directional Switcher

Statement

Thanks for purchasing this product, please read this user manual carefully before using this product. The functions described in this version are updated till January, 2018. In the constant effort to improve our product, we reserve the right to make functions or parameters changes without notice or obligation.

Safety Precaution

- Do not dismantle the housing or modify the module to avoid electrical shock or burn.
- Using accessories not meeting the products' specifications may cause damage, deterioration or malfunction.
- Do not expose the unit to rain, moisture or install this product near water.
- Install the device in a place with fine ventilation.
- Do not twist or pull by force ends of the cable. It can cause malfunction.
- Do not use liquid or aerosol cleaners to clean this unit.
- Always unplug the power to the device before cleaning.
- Unplug the power when not used for a long period of time.
- Refer all servicing to qualified service personnel.

After-sales Service

We provide limited warranty for the product within three years.

Introduction

The CE-SS3113 is an ultra-thin bidirectional 3x1/1x3 HDMI2.0 switcher with 4 HDMI ports. The switcher supports HDMI resolutions up to 4K@60Hz 4:4:4.

HDMI 2.0 Bi-directional Switcher

Features

- Supports HDMI2.0 4k@60Hz 4:4:4.
- HDCP2.2 compliant.
- Supports bi-directional switching.
- Supports HDR.
- Supports Hot-Plug detection.
- No need of external power supply.

Package Contents

- 1 x CE-SS3113
- 1 x Velcro Tape
- 1 x User Manual

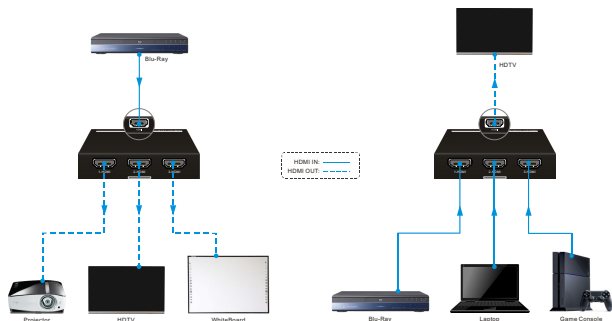
Panel Description



- ① SWITCH: Press this button to switch 1-HDMI, 2-HDMI, or 3-HDMI as input or output.
- ② IIN/OUT: Press this button to select the HDMI(③) as input or output.
- ③ HDMI: Connect with HDMI source or display.
- ④ IN: Illuminates blue when the HDMI port(③) is selected as input.
- ⑤ OUT: Illuminates blue when the HDMI port(③) is selected as output.
- ⑥ 1/2/3-Signal LED: Illuminates blue when the corresponding source or display is selected.
- ⑦ 1/2/3-HDMI: 3 HDMI ports, connect with sources or displays.

HDMI 2.0 Bi-directional Switcher

Connection Diagram



Specifications

Input & Output	(4) HDMI
Connector	(1) 19-pin type-A female HDMI
General	
Resolution	Up to 4Kx2K@60Hz 4:4:4
HDMI Standard	HDMI2.0
HDCP Compliance	HDCP2.2 pass-through
Power Consumption	4W (Max)
Operation Temperature	-10~40°C
Storage Temperature	-15~55°C
Relative Humidity	10%-90%
Dimensions (W*H*D)	80mm x 16mm x55mm
Net Weight	131g