

# User Manual

# WOXCON

## TPUH409T

### 4K HDMI Wallplate Transmitter



**All Rights Reserved**

Version: TPUH409T\_2018V1.0

## 4K HDMI Wallplate Transmitter

---

### Preface

Read this user manual carefully before using the product. Pictures shown in this manual are for reference only. Different models and specifications are subject to real product.

This manual is only for operation instruction, please contact the local distributor for maintenance assistance. The functions described in this version were updated till November, 2018. In the constant effort to improve the product, we reserve the right to make functions or parameters changes without notice or obligation. Please refer to the dealers for the latest details.

### FCC Statement

This equipment generates, uses and can radiate radio frequency energy and, if not installed and used in accordance with the instructions, may cause harmful interference to radio communications. It has been tested and found to comply with the limits for a Class A digital device, pursuant to part 15 of the FCC Rules. These limits are designed to provide reasonable protection against harmful interference in a commercial installation.

Operation of this equipment in a residential area is likely to cause interference, in which case the user at their own expense will be required to take whatever measures may be necessary to correct the interference.

Any changes or modifications not expressly approved by the manufacture would void the user's authority to operate the equipment.



## 4K HDMI Wallplate Transmitter

---

### SAFETY PRECAUTIONS

To ensure the best from the product, please read all instructions carefully before using the device. Save this manual for further reference.

- Unpack the equipment carefully and save the original box and packing material for possible future shipment
- Follow basic safety precautions to reduce the risk of fire, electrical shock and injury to persons.
- Do not dismantle the housing or modify the module. It may result in electrical shock or burn.
- Using supplies or parts not meeting the products' specifications may cause damage, deterioration or malfunction.
- Refer all servicing to qualified service personnel.
- To prevent fire or shock hazard, do not expose the unit to rain, moisture or install this product near water.
- Do not put any heavy items on the extension cable in case of extrusion.
- Do not remove the housing of the device as opening or removing housing may expose you to dangerous voltage or other hazards.
- Install the device in a place with fine ventilation to avoid damage caused by overheat.
- Keep the module away from liquids.
- Spillage into the housing may result in fire, electrical shock, or equipment damage. If an object or liquid falls or spills on to the housing, unplug the module immediately.
- Do not twist or pull by force ends of the cable. It can cause malfunction.
- Do not use liquid or aerosol cleaners to clean this unit. Always unplug the power to the device before cleaning.
- Unplug the power cord when left unused for a long period of time.
- Information on disposal for scrapped devices: do not burn or mix with general household waste, please treat them as normal electrical wastes.

**4K HDMI Wallplate Transmitter**

---

**Table of Content**

1. Product Introduction .....	1
1.1 Feature .....	1
1.2 Package List .....	1
2. Specification .....	2
3. Panel Description .....	3
3.1 Front Panel .....	3
3.2 Rear Panel .....	4
4. System Connection .....	5
5. Panel Drawing .....	6
6. Troubleshooting & Maintenance .....	7
7. Customer Service .....	8

## 4K HDMI Wallplate Transmitter

---

### 1. Product Introduction

Thanks for choosing the TPUH409T 4K HDMI Wallplate Transmitter, which is designed to extend HDMI input signal to far-end display device, and the transmission distance is up to 131ft/40m at 4K and 230ft/70m at 1080P video over a single CATx cable.

The Wallplate Transmitter supports CEC, IR and RS232 pass-through. Moreover, 48V PoH allows the transmitter to be powered from a compatible receiver, the transmitter also has 12V DC output for powering 3rd party device nearby.

#### 1.1 Feature

- Supports HDMI signal up to 4K@60Hz 4:2:0 8bit.
- Supports HDMI 1.4 standard and HDCP 2.2 compliant. Ensures display of content-protected media and interoperability with other HDCP compliant devices.
- HDBaseT technology extend HDMI signal 4K up to 131ft/40m and 1080P up to 230ft/70m.
- 10.2Gbps bandwidth.
- Supports RS232 pass-through with HDBaseT connection.
- Supports IR pass-through to extend IR signal to control display device.
- 48V PoH (power over HDBaseT) allows powering from the compatible receiver at the display end.
- Provides 12V DC power supply for other devices.

#### 1.2 Package List

- 1x TPUH409T 4K Wallplate HDBaseT Transmitter
- 2x Mounting Screws
- 3x 2-pin Pluggable Terminal Blocks
- 1x 3-pin Pluggable Terminal Block
- 1x User Manual

**Note:** Please confirm if the product and the accessories are all included, if not, please contact with the dealers.

## 4K HDMI Wallplate Transmitter

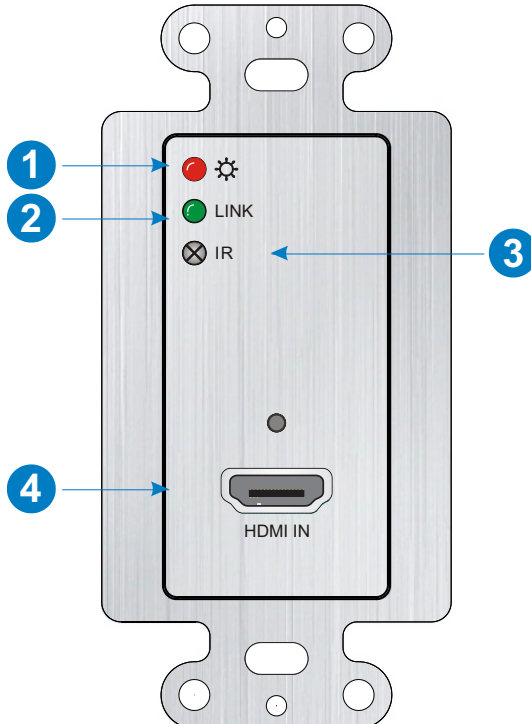
## 2. Specification

<b>Input</b>	
Input	(1) HDMI
Input Connector	(1) Female type A HDMI
HDMI Input Resolution	Up to 4K/UHD@60Hz 4:2:0 8bit
<b>Output</b>	
Output	(1) HDBT OUT (PoH IN)
Output Connector	(1) RJ45
HDBT Output Resolution	Up to 4K/UHD@60Hz 4:2:0 8bit
<b>Control</b>	
Control Ports	(1) IR, (1) RS232, (1) IR IN
Control Connector	(1) Built-in IR sensor, (1) 3-pin terminal block, (1) 2-pin terminal block
<b>Power</b>	
Power Ports	(1) 12V DC IN, (1) 12V DC OUT
Power Connector	(2) 2-pin terminal blocks
<b>General</b>	
Bandwidth	10.2Gbps
Transmission Mode	HDBaseT
HDMI Version	1.4
HDCP Version	2.2
Transmission Distance	4K≤131ft/40m, 1080P≤230ft/70m
Power Supply	Powered from the compatible receiver by CATx cable.
Maximum Power Consumption	9W
Operation Temperature	-5~ +55°C
Storage Temperature	-25 ~ +70°C
Relative Humidity	10% ~ 90%
Dimension (W*H*D)	50mm x 103mm x 50mm
Net Weight	180g

## 4K HDMI Wallplate Transmitter

### 3. Panel Description

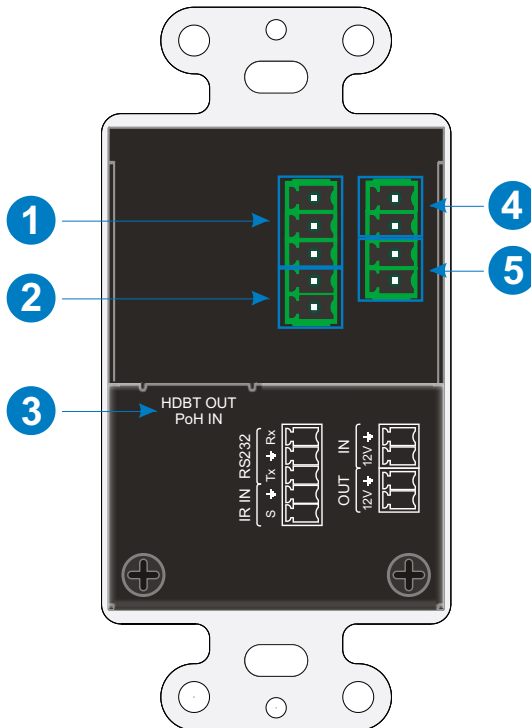
#### 3.1 Front Panel



- ① **POWER LED:** Illuminates RED when power is applied.
- ② **LINK LED:** Illuminates GREEN when the transmitter is connected to the receiver successfully.
- ③ **IR:** Built-in IR sensor/receiver for IR pass-through control.
- ④ **HDMI IN:** Type-A HDMI port to connect HDMI source.

## 4K HDMI Wallplate Transmitter

## 3.2 Rear Panel



- ① **RS232:** 3-pin terminal block for RS232 pass-through control.
- ② **IR IN:** 2-pin terminal block to connect central control device.
- ③ **HDBT OUT (POH IN):** RJ45 HDBaseT output port to connect to the HDBT input port of the compatible receiver by a CATx cable. It supports 48V PoH to enable the transmitter can be powered from the compatible receiver.
- ④ **DC IN:** 2-pin terminal block to connect 12V DC power adapter.
- ⑤ **DC OUT:** 2-pin terminal block to connect / power 3rd party device.



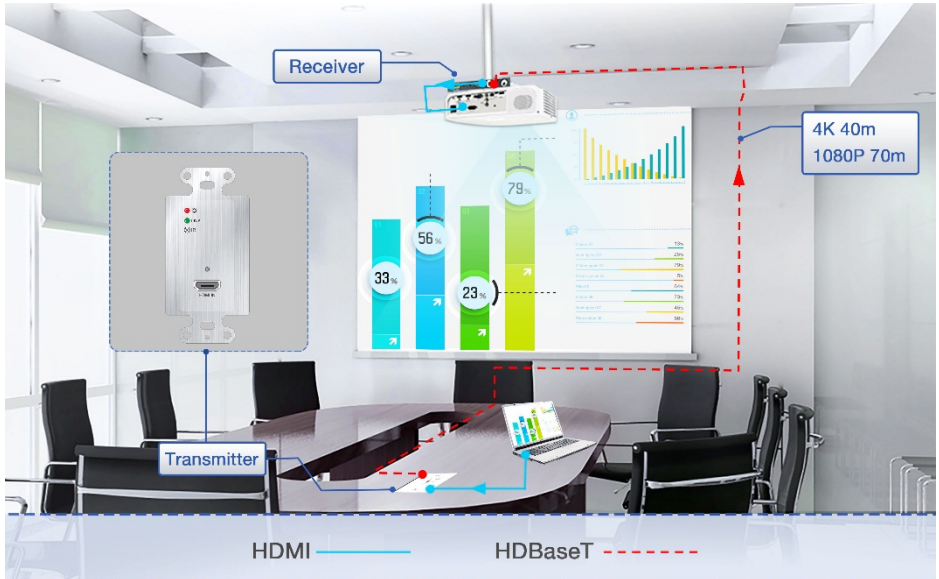
## 4K HDMI Wallplate Transmitter

### 4. System Connection

#### Usage Precautions

- Make sure all components and accessories included before installation.
- System should be installed in a clean environment with proper temperature and humidity.
- All of the power switches, plugs, sockets, and power cords should be insulated and safe.
- All devices should be connected before power on.

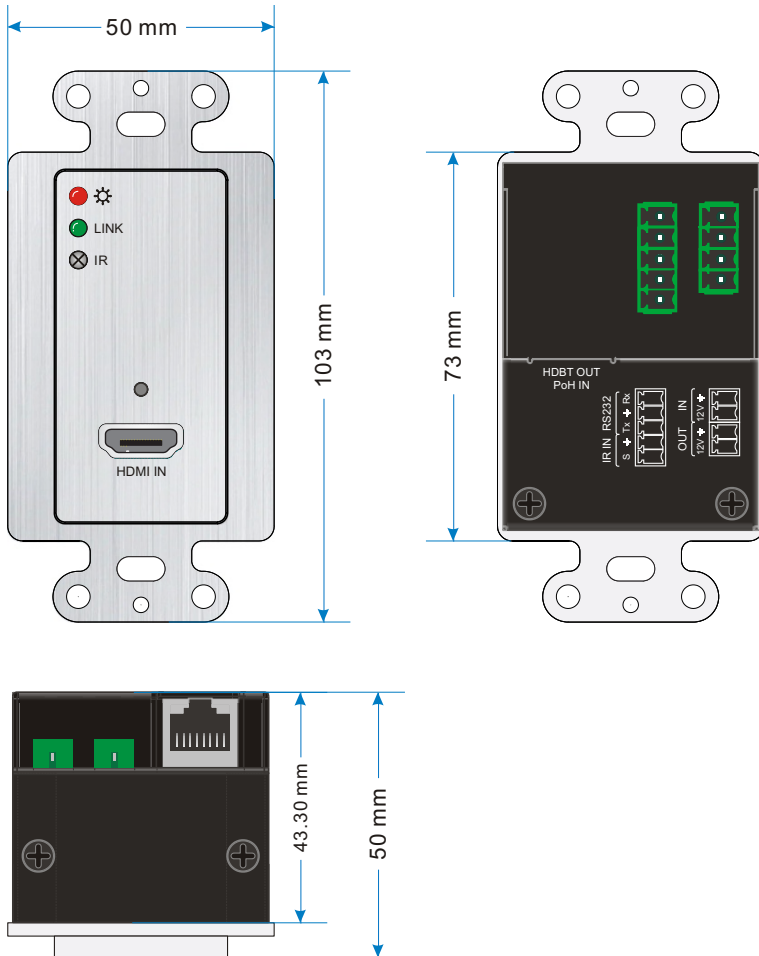
The following diagram illustrates typical input and output connection that can be utilized with the transmitter



**Note:** We recommends Cat5e/6/7 cabling with alien crosstalk prevention technology for the performance of HDBaseT link.

4K HDMI Wallplate Transmitter

5. Panel Drawing



## 4K HDMI Wallplate Transmitter

**6. Troubleshooting & Maintenance**

<b>Problems</b>	<b>Potential Causes</b>	<b>Solutions</b>
Color losing or no video signal output in HDMI display.	The connecting cables may not be connected correctly or it may be broken.	Check whether the cables are connected correctly and in working condition.
No HDMI signal output in the device while local HDMI input is in normal working state.		
Output image with white noise.		
<b>POWER</b> indicator doesn't work or no respond to any operation.	Loose or failed power cord connection.	Ensure the power cord connection is good.

**Note:** *If your problem still remaining after following the above troubleshooting steps, please contact your local dealer or distributor for further assistance.*

## 7. Customer Service

The return of a product to our Customer Service implies the full agreement of the terms and conditions hereinafter. These terms and conditions may be changed without prior notice.

### 1) Warranty

The limited warranty period of the product is fixed three years.

### 2) Scope

These terms and conditions of Customer Service apply to the customer service provided for the products or any other items sold by authorized distributor only.

### 3) Warranty Exclusion

- Warranty expiration.
- Factory applied serial number has been altered or removed from the product.
- Damage, deterioration or malfunction caused by:
  - ✓ Normal wear and tear.
  - ✓ Use of supplies or parts not meeting our specifications.
  - ✓ No certificate or invoice as the proof of warranty.
  - ✓ The product model showed on the warranty card does not match with the model of the product for repairing or had been altered.
  - ✓ Damage caused by force majeure.
  - ✓ Servicing not authorized by distributor.
  - ✓ Any other causes which does not relate to a product defect.
- Shipping fees, installation or labor charges for installation or setup of the product.

### 4) Documentation:

Customer Service will accept defective product(s) in the scope of warranty coverage at the sole condition that the defect has been clearly defined, and upon reception of the documents or copy of invoice, indicating the date of purchase, the type of product, the serial number, and the name of distributor.

**Remarks:** Please contact your local distributor for further assistance or solutions.